

Danish Radio

if_group



General description:

if_group

The Concert Hall is wrapped by a steel cage that supports, on its exterior face, a continuous fabric screen used for projection of images. This steel cage is also used to support the cable net facade that partially wraps the volume of the building and the glass roof over the foyer.

This specification concerns the cable grid façade, the glass roof over the foyer area glazing in the restaurant.

The cable grid façade is a system of components composed of the perimeter structure, the cable structure and the glazing (frames and glass). The façade is double glazed, with glass panels approximately 1.7m x 1.7m.

The glazed roof over the foyer of the Concert Hall is located at the South side of the building.

The roof is composed of a glazing system which can be partially opened as several glazing modules pivot along their edge which connects to primary steel structure.

The primary steel structure which provides support for the cable grid façade and the glass roof is not part of this work package.

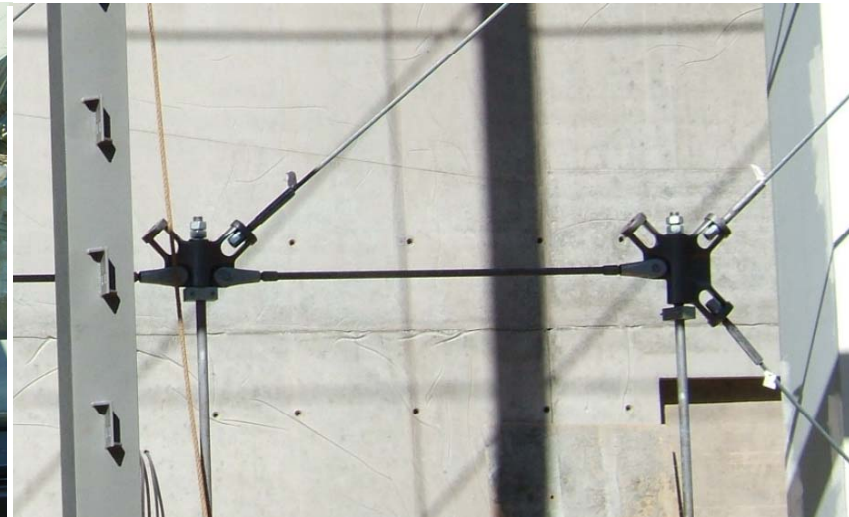
Long way

if_group



Support points

if_group



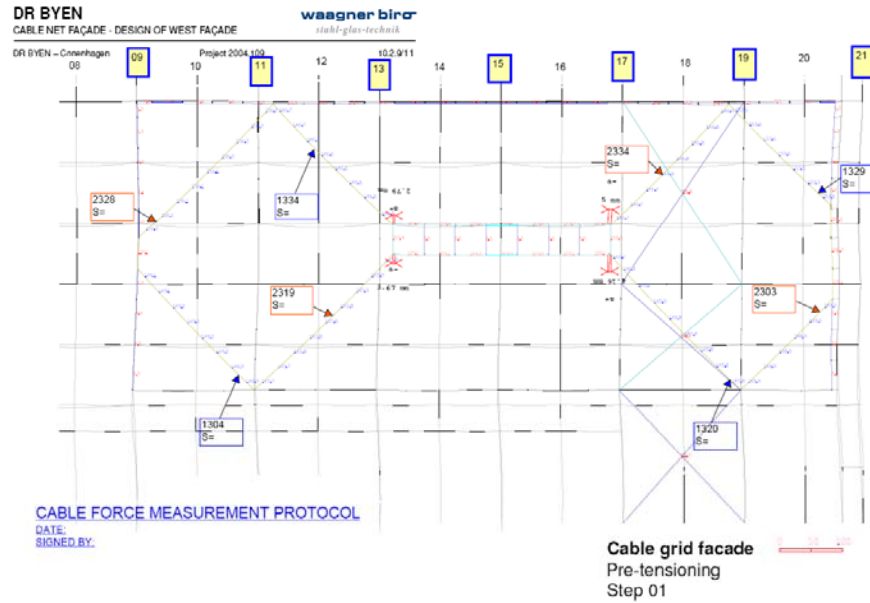
Tensioning devices

if_group



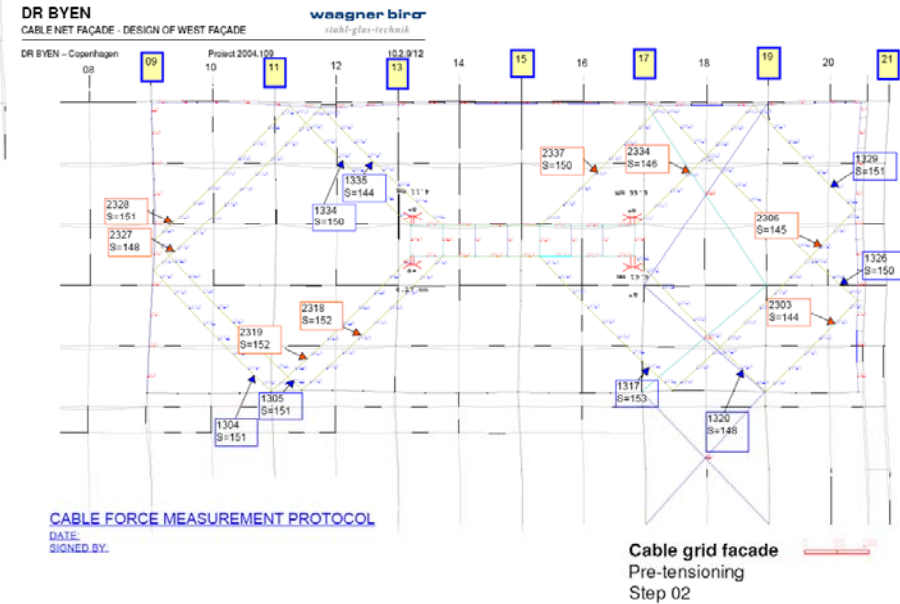
Tensioning steps

if_group



Annex - Fig. 7 Erection sequence calculation - Step 01

Wagner Biro ZENKER & HANDEL CONSULTING ENGINEERS



Annex - Fig. 8 Erection sequence calculation - Step 02

Wagner Biro ZENKER & HANDEL CONSULTING ENGINEERS

Concert Hall

if_group



Outside view

if_group



Project: Danish Radio 2005