

Lufthansa administration building

if_group



General description:

if_group

Comb-shaped structure having ten 'fingers' and providing accommodation for 1650 staff. The fingers of the building are roofed by double-curved reinforced concrete shells; the atrium roofs consist of double-curved steel grid shells. To achieve maximum transparency, the external façade of each atrium is designed as a cable façade whose only load-bearing elements are vertically tensioned cables. Point-mounted glass panels are fixed between these cables. The façade sections which may be up to 25 meters high, can be deflected by up to 400 mm under wind load.

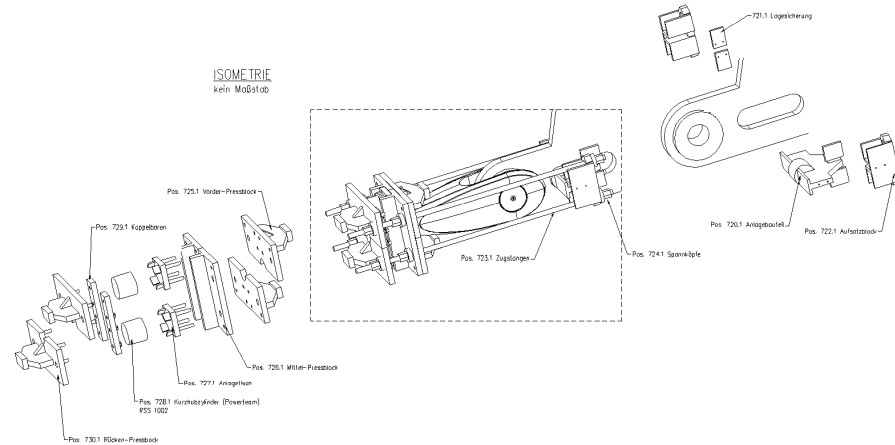
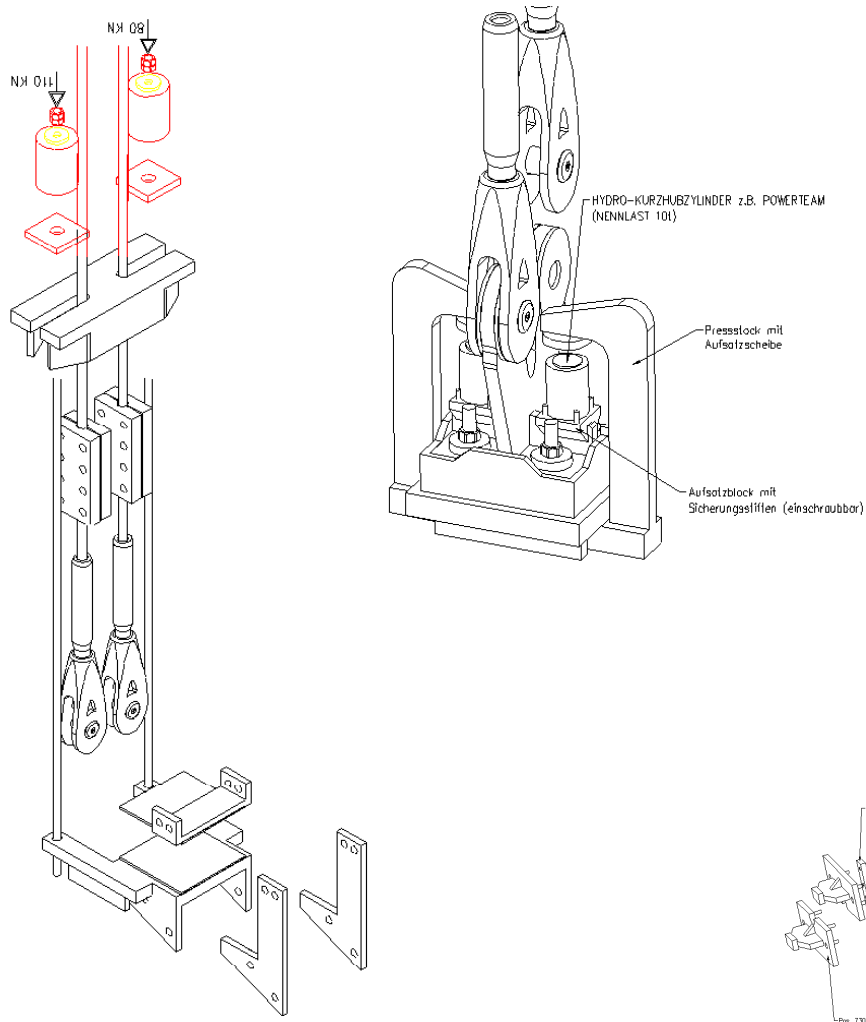
Before and after if

if_group



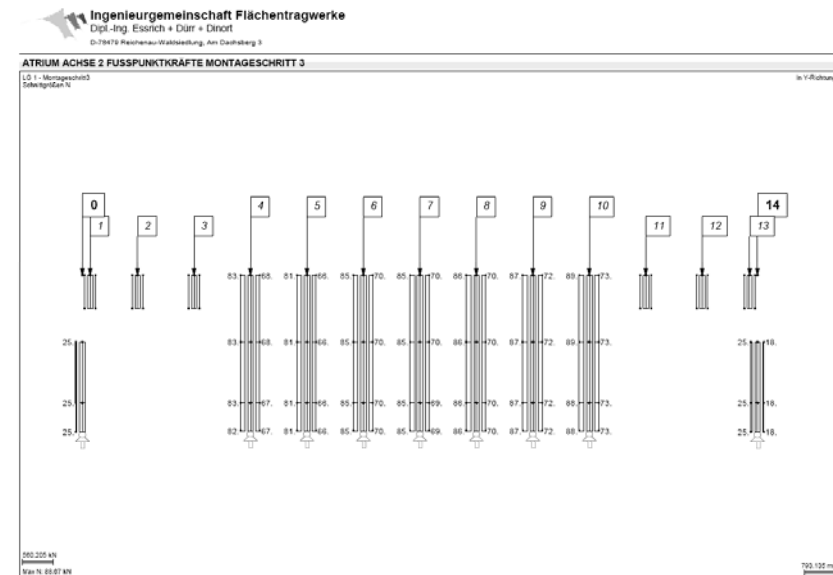
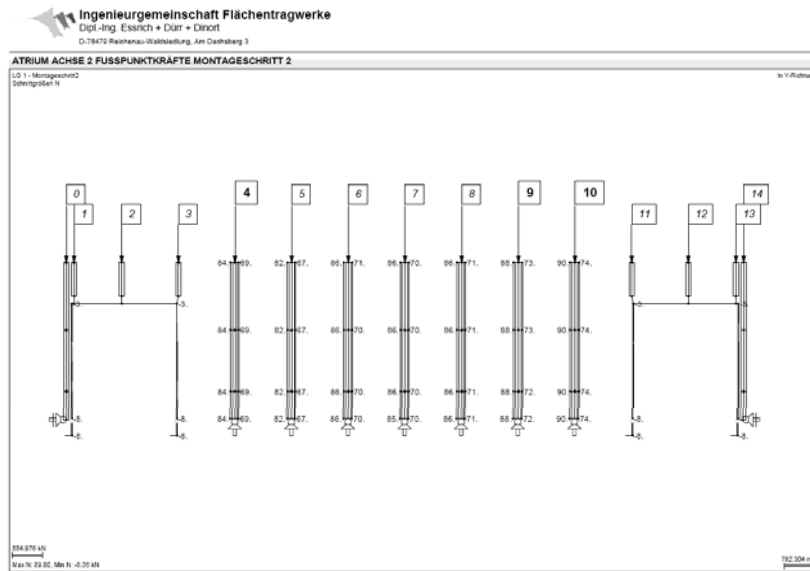
Tensioning devices

if_group



Tensioning steps

if_group



Atrium

if_group



Project: Lufthansa, 2006

Facade views

if_group

